

125 YEARS OF ENGINEERING EXCELLENCE AT NEWBIE



COCHRAN

125 Years of Engineering Excellence at Newbie



1914-1918
Cochran is operated by the Admiralty and build a wide range of units used to power many different wartime applications

1918
Longtime a responsible employer, a mass meeting in 1918 of Cochran workers forms one of the UK's very first Industrial Councils to help improve relations and productivity, reduce waste and develop a groundbreaking package of special employee benefits

1939-1945
Cochran supplied thousands of steam boilers for the war effort, including innumerable heating units for barracks and training camps.

1944
In addition to making plate armour for tanks, Cochran was one of the companies trusted to build caissons for the famous Mulberry Harbour that played a crucial role in the D-Day landings



1974
Cochran are in receipt of the highly prestigious Queen's Royal Warrant for the supply of boilers and associated equipment to the various Royal households. This most illustrious of honours is awarded to only ONE British boiler manufacturer at any one time and marks Cochran out as being the best of the best in UK heat generation engineering



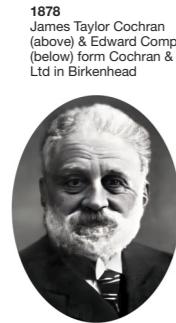
1977
Clarke Chapman's merger with Reyrolle Parsons sees the formation of Northern Engineering Industries plc, with Thompson Cochran becoming NEI International Combustion, a further merger of NEI with Rolls Royce saw Cochran become part of the world-famous company's Industrial Power Group in 1989



2018
With the introduction of the Medium Combustion Plant Directive (MCPD) which set the standard for emission reduction within the EU, Cochran took this opportunity to re-brand its products introducing the ST and HW ranges.

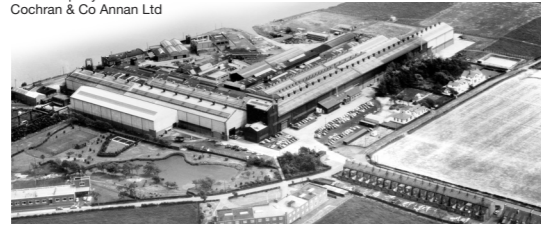
Although it was a major decision to retire such famous names as the Wee Chieftain and Thermo, this enabled Cochran advances in low NOx burner technology to provide a comprehensive range of boilers to deliver benchmark standards in environmental emissions and performance.

In addition to the ST and HW ranges, the company also now build composite steam boilers and heat recovery boilers to make full use of other heat sources



1878
James Taylor Cochran (above) & Edward Compton (below) form Cochran & Co Ltd in Birkenhead

1898
Move to a 52 acre site at Annan, Scotland, gaining more space and direct rail access and a slipway on the river Annan. New company is formed Cochran & Co Annan Ltd



1899
The new Newbie site includes workers' homes, a women's co-operative guild, library, a social club and even its own boating lake!

1899
The first Annan-built Cochran boiler is completed and safety tested under Lloyd's supervision

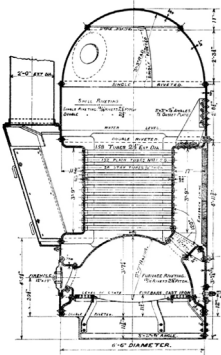
1902
Founders, Cochran and Compton retire, the business is reorganised under the leadership of a Board that included Compton's son, Charles Edward

1934
Cochran licences the Sinuflo steam tube design from Percy St G Kirke. Its sinuous wavy profile substantially improves heat transfer and efficiency, particularly when scavenging waste heat from smelting and other processes

1969
John Thompson Cochran Group is launched. With factories in Lincoln and Glasgow, as well as Annan, it is Europe's largest boilermaker. 1970 sees the company merged with Clarke Chapman on Tyneside, becoming the Thompson Cochran division of the group. The oil crisis and changing market saw both the Lincoln and Glasgow sites closed by the early 80s

Global Exports
From its earliest days, Cochran recognised the importance of international markets for its world-beating combustion technologies. Over the decades, huge numbers of boilers have been shipped to the Middle East, Far East, South and Central America. Whilst most of the world's Scotch Whisky is produced using Cochran energy, China has historically also been a crucial market for the business

Today
Despite its increasingly globalised marketplace, Cochran remains headquartered at Newbie, close to Annan in Southern Scotland. All key elements of the business; from its highly successful training operation, through manufacturing, to its comprehensive spares and service provision; remain at the site alongside the Senior Management, Administration and Accounting teams.



1876
Vertical Shell Boiler Design is Registered by Edward Compton. This revolutionary upright design, with its integral firebox improves efficiency and reduces the boiler's footprint

1881
The new upright boiler design is SO successful as an auxiliary steam ship boiler that by 1881 FOUR firms across the UK are already making it under licence

1900-1920
Cochran's compact, powerful boilers become the universal auxiliary 'Donkey' engine, for steam ships, driving deck cranes and other lifting gear

1913
Cochran undertakes the first successful trials to optimise the use of oil to fire a steam boiler, rather than coal or wood

1915
Cochran goes on to adapt its boilers to fire a wide range of wood, coal, coke, wood waste gas and even bagasse (sugar cane waste)



1878
Cochran builds the world's FIRST powered submarine, the 'Resurgam'. 42 feet long and weighing 30 tonnes, the William Garrett-designed ship had a crew of three

1890s
The Birkenhead company's rugged shallow draft paddle steamers were particularly suited for river freight and were used extensively plying the Amazon and other South American rivers where Cochran built boats largely monopolised the transport of rubber and other goods to and from coastal ports. More than 20 vessels are built for Africa and the Americas



1898
Wider shipbuilding, engine making and the Cochran Donkey wall mounted boiler manufacturing is prospering following the move to the specially designed new facility on the Solway coast

1901
Shipbuilding is ended enabling Cochran to concentrate on the construction of boilers and related products



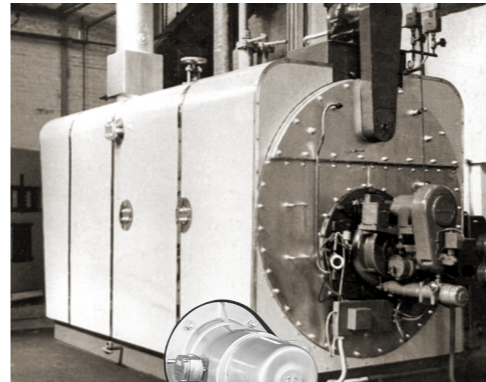
1940
Cochran incorporates the Sinuflo tube into its groundbreaking and highly successful 'Economic' boiler which also featured induced draft, a large combustion chamber and exceptionally good internal access for servicing

1950s
Cochran's 'Economic' boiler proves highly successful and reliable, with the largest unit continuing to generate 25,000 lbs of steam an hour throughout the 1950s



1959
Governmental drives for greater efficiency prompts development of the 'Series II' vertical boiler. Delivering a groundbreaking 80% efficiency the compact fully automated design could be fired with gas or solid fuel

1963
1963 marked the launch of the first 'modern' packaged boiler design, the now famous 'Chieftain'. The packaged boiler design delivered high efficiency and included all auxiliary equipment in a compact three pass unit, that was easily transported and installed. Its little brother, the 'Wee Chieftain' met the lower volume outputs

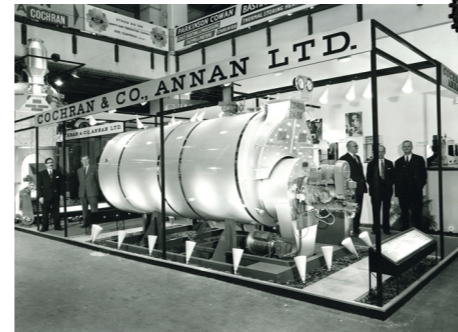


1964
Cochran launches the 'Spheroid' boiler. Superseding the Series II boiler, the Spheroid was available in ten sizes delivering up to 11,500 lbs of steam per hour. The all-welded construction was a direct descendant of the original Cochran & Co boiler design of 1878

1966
The 'Clansman' is launched to deliver hot water in the same compact, efficient packaged format as the Chieftain range, and was similarly fired with oil or gas. The low temperature back end design delivered reduced risk of tube leakage, whilst powder injection protected the gas side from low temperature corrosion. Seventeen sizes of Clansman were made

1928
Cochran commences the design and construction of pressure vessels and condensers. Used in the processing, petrochem and chemical industries, they were up to 75 feet long, weighed as much as 250 tonnes and operated at pressures as high as 250 psi. The availability of the Newbie slipway enabled many of these huge units to simply be floated to their destination!

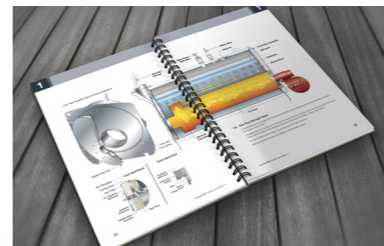
2000
After around 40 years leading the field in the construction of high spec. pressure vessels, Cochran chose to wind down their manufacture in order to concentrate on the development of its world-beating boiler ranges



1960s
Drawing on its unrivalled track record for boilers, in the 1950s Cochran makes its first moves towards the development and manufacture of the company's Mk II burners - matching the efficiency and reliability of its world famous boilers with the latest in firing technology

1980s and 1990s
The company's range of highly successful workhorse burners are introduced, providing oil or gas firing or dual fuel firing. Cochran's Simplex range is launched in 1986, with the company's Triplex burners appearing ten years later in 1996

2000
Meeting the requirement for higher outputs, the Equinox boiler range is introduced. Providing up to 16000 kW of heat, the Equinox offers gas or dual fuel firing, making it ideal for use in the volatile marketplace of modern fuel costs



Training
As the UK's leading industrial boilermaker, Cochran is at the forefront of expertise in energy centre operation, management, maintenance and efficiency. The company offers a broad selection of highly respected legislation-compliant training covering all aspects of the boilerhouse. This provides an invaluable skills development resource for operators, managers and engineers working with all makes of industrial steam and hot water boilers and associated plant

Spares
Cochran maintains the UK's largest stock of specialist boilers spares and consumables. Available online on the dedicated spares website launched in 2012, or by phone, the company is an official agent for all the leading names in equipment, parts and operational upgrades. A substantial sales team offer expert support for legacy parts and current Cochran equipment, as well as consumables covering all the leading competitor brands of industrial boiler. They are backed up by Cochran's own significant fabrication capability to ensure that there is no part they cannot supply, provide an alternative to, or manufacture

Maintenance and Repair
The company operates the UK's largest team of highly experienced maintenance, repair and service engineers. Our expert engineers provide contracted servicing, 24/7/365 emergency breakdown cover, consultancy, cleaning and installation of the latest plant enhancements. Where shutdowns are necessary, or where additional steam or hot water is needed, Cochran's packaged boiler hire options offer an ideal solution that is also proving extremely popular for new businesses, planned production peaks and product launches that require extra energy with minimal capital investment



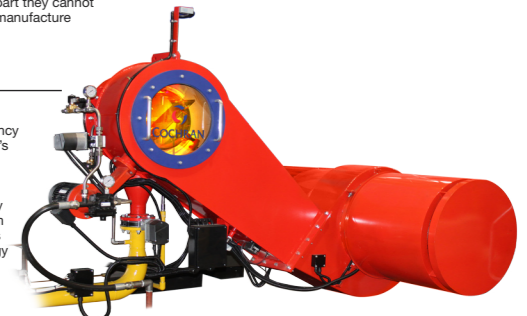
2003
Launched in 2003, boiler hire, whether provided as trailer mounted or containerised units, or in comprehensive purpose-built energy centres for longer term leases comes to the fore. Combining full Cochran maintenance backup and plug'n'play installation with minimal upfront capital expenditure the hire option is ideal for fast moving modern manufacturing and processing - matching short term peak energy requirements, and new site and product launches with a highly efficient, rapidly installed, low upfront cost energy solution



2014
Cochran launches its advanced Synergy touch screen boilerhouse management system. Providing comprehensive control and monitoring of multiple burners, boilers and other boilerhouse equipment, remote features offer the potential to substantially reduce boilerhouse manning costs

2020
The Eclipse range is launched, combining the key features of the groundbreaking Synergy system with a more compact 7 inch screen, the Eclipse has been developed for smaller energy centres operating a single boiler. However many of the remote monitoring and operation features of its high tech brother are included, enabling cost-effective reduction of on-site boilerhouse staffing

2023
Having weathered a major move north, two world wars, changes of ownership, multiple periods of global recession and an industrial steam and hot water generation market that has gone through a comprehensive range of changes; both in fuelling and in substantially increased efficiency requirements, in 2023 Cochran celebrates its 125th anniversary of manufacturing at its famous headquarters near Annan. Today the vision of its founders for efficiency and quality continues to place the company at the global forefront of innovation, and reliability



FORMED IN 1878 BY JAMES TAYLOR COCHRAN AND EDWARD CROMPTON, COCHRAN & CO WAS FOUNDED AT BIRKENHEAD, MERSEYSIDE ON THE BACK OF EDWARD CROMPTON'S REVOLUTIONARY PATENTED VERTICAL STEAM BOILER DESIGN.

THRIVING IN THE MELTING POT OF VICTORIAN ENGINEERING INNOVATION, THE COMPANY WENT FROM STRENGTH-TO-STRENGTH; ENCOMPASSING, BOILERMAKING, SHIPBUILDING AND EVEN THE CONSTRUCTION OF THE WORLD'S FIRST STEAM POWERED SUBMARINE.

BY 1898, THE COMPANY'S RAPID, SUSTAINED EXPANSION DEMANDED A MOVE TO A NEW, LESS OVERCROWDED LOCATION THAN THE MERSEY BASIN. EXTENSIVE RESEARCH IDENTIFIED AN IDEAL 52 ACRE SITE WITH DIRECT ACCESS TO THE SEA AT ANNAN IN SOUTHERN SCOTLAND.

TODAY, THE COMPANY LOOKS FORWARD TO AN EXCITING FUTURE UNDER STRONG GUIDANCE AND WITH THE SUPPORT OF AN EXCEPTIONAL WORKFORCE. HAVING SET THE STANDARDS IN BOILER MAKING FROM ITS EARLIEST DAYS 145 YEARS AGO, TODAY WE CELEBRATE THE ACHIEVEMENT OF REACHING 125 YEARS OF MANUFACTURING EXCELLENCE AT OUR ANNAN BASE: SOMETHING WE ARE ALL IMMENSELY PROUD OF AND GRATEFUL FOR THE CONTRIBUTIONS OF EVERY EMPLOYEE, BOTH PAST AND PRESENT.



+44(0) 1461 202 111 www.cochran.co.uk

Cochran Ltd, Newbie Works, Annan, Dumfries & Galloway, UK DG12 5QU. info@cochran.co.uk

©2023 Copyright Cochran Ltd Design by CarneWhitney.com 016973 52009